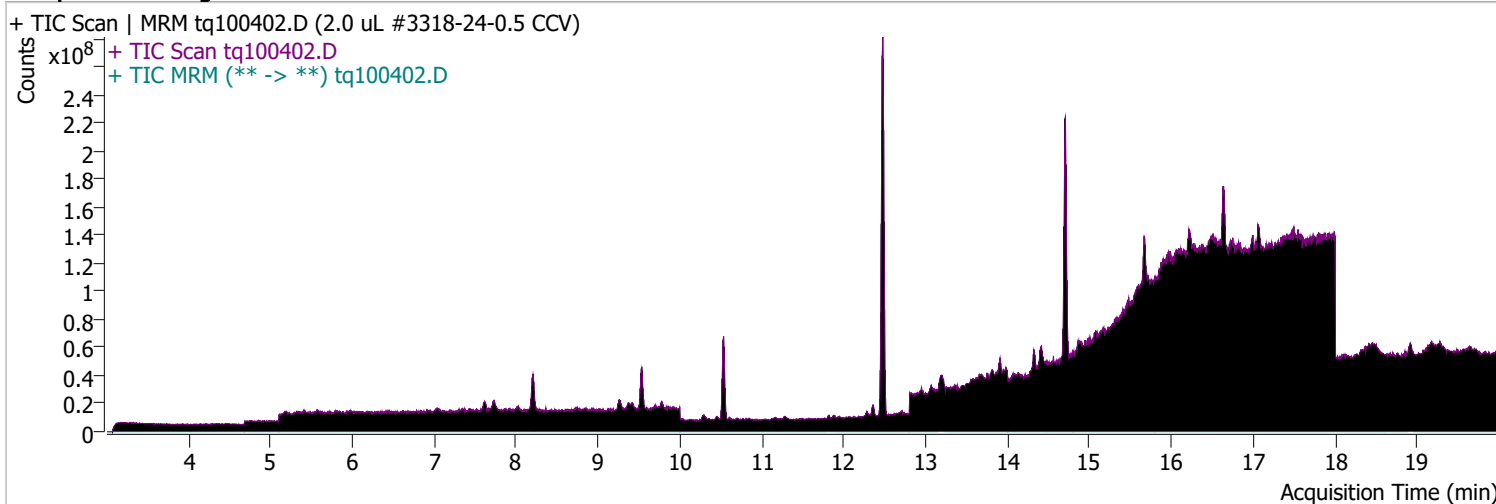


Quantitative Analysis Sample Report

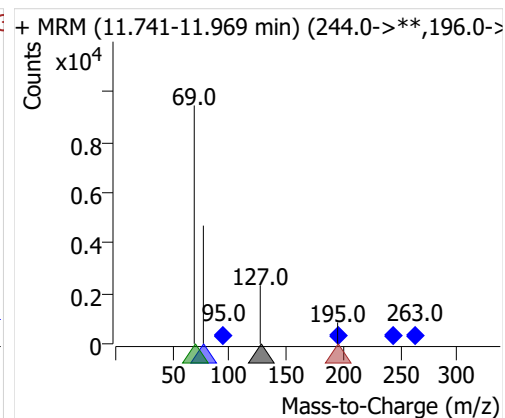
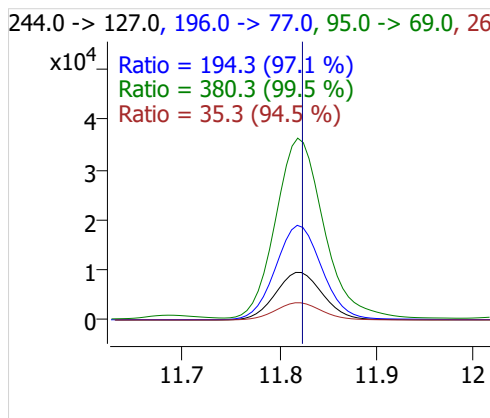
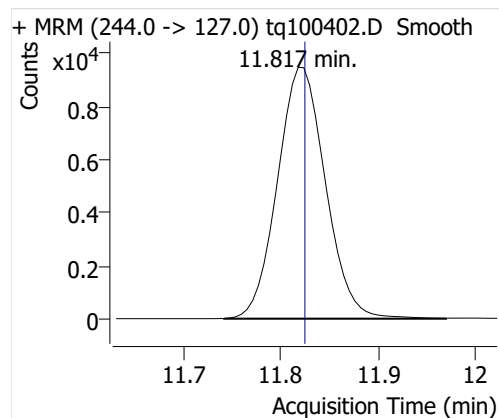
Batch Path	D:\MassHunter\GCMS\1\data\04OCT22\QuantResults\04oct22.batch.bin		
Analysis Time	10/4/2022 10:09 AM	Analyst Name	DESKTOP-R0LAL7E\analyst
Report Time	10/28/2022 2:18:07 PM	Reporter Name	ES-AREA1\US32_USR_INS22923
Last Calib Update	10/3/2022 8:55 AM	Batch State	Processed
Quant Batch Version	10.1	Quant Report Version	10.1
Acq. Time	10/4/2022 9:50 AM	Data File	tq100402.D
Sample Type	CC	Sample Name	2.0 uL #3318-24-0.5 CCV
Dilution	1	Acq. Method	tq22m0930marks

Sample Chromatogram

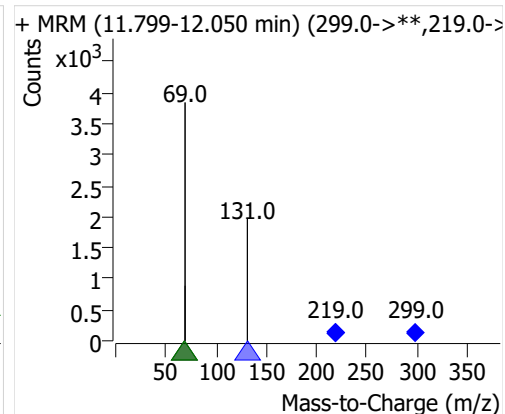
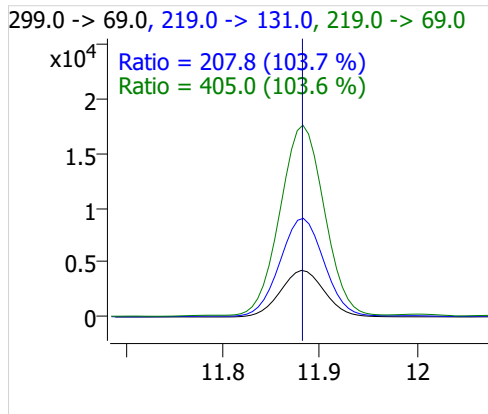
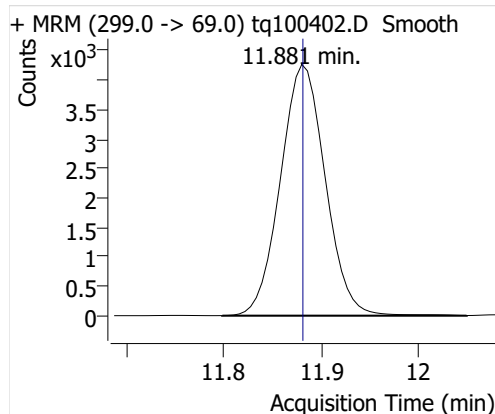


Compound	ISTD	RT	Resp.	ISTD Resp.	Resp. Ratio	Final Conc	Units
4:2 FTOH	6:2 FTOH-C13	11.817	32642	61844	0.5278	0.9602	ng
5:2sFTOH	6:2 FTOH-C13	11.881	13708	61844	0.2216	0.9366	ng
7:2sFTOH	6:2 FTOH-C13	13.182	28159	61844	0.4553	0.9567	ng
6:2 FTOH	6:2 FTOH-C13	13.216	60464	61844	0.9777	0.9683	ng
8:2 FTOH-C13	6:2 FTOH-C13	14.413	20220	61844	0.3269	0.9370	ng
8:2 FTOH	6:2 FTOH-C13	14.413	16379	61844	0.2648	0.9533	ng
10:2 FTOH	6:2 FTOH-C13	15.477	5783	61844	0.0935	0.8949	ng
12:2 FTOH	6:2 FTOH-C13	16.452	20744	61844	0.3354	0.8836	ng
NMeFOSA	6:2 FTOH-C13	18.662	15391	61844	0.2489	0.8873	ng
NEtFOSA	6:2 FTOH-C13	18.931	65304	61844	1.0559	0.8601	ng

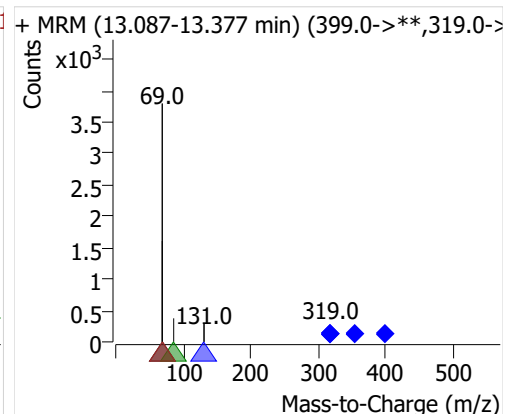
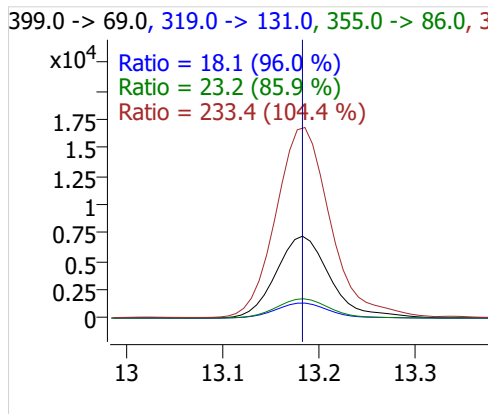
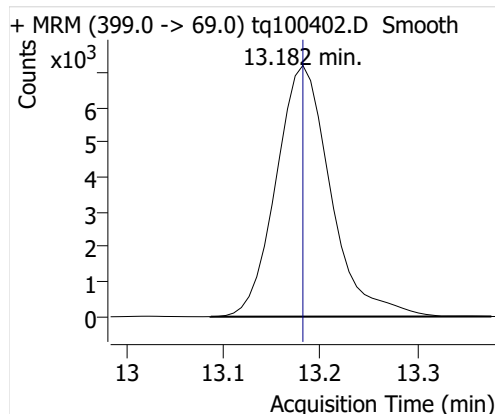
4:2 FTOH



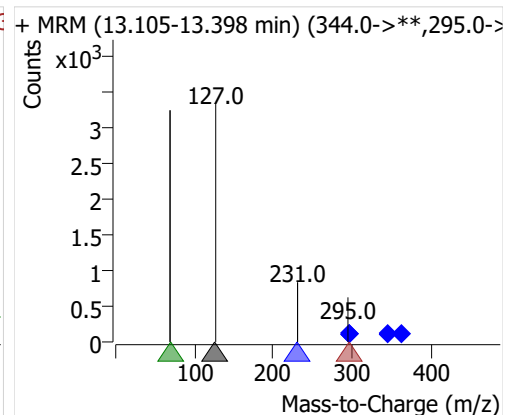
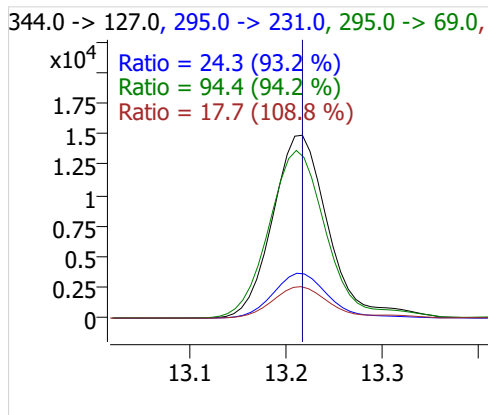
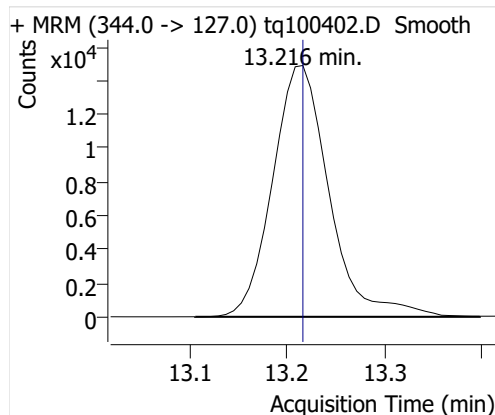
5:2sFTOH



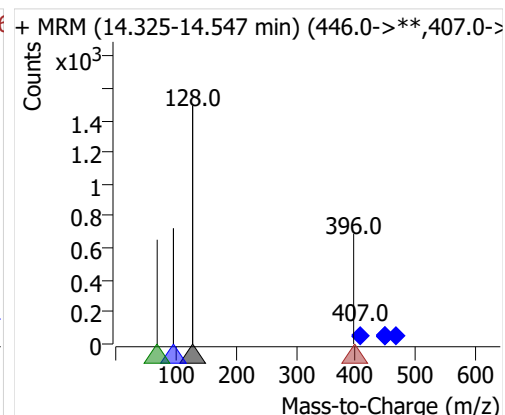
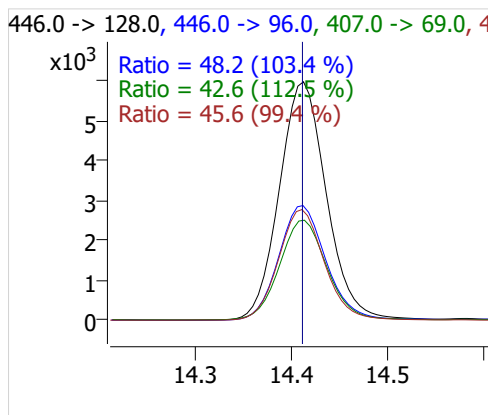
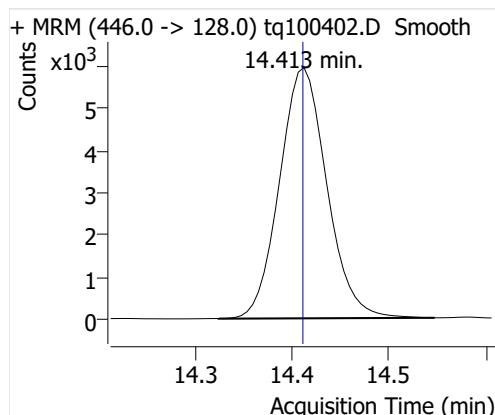
7:2sFTOH



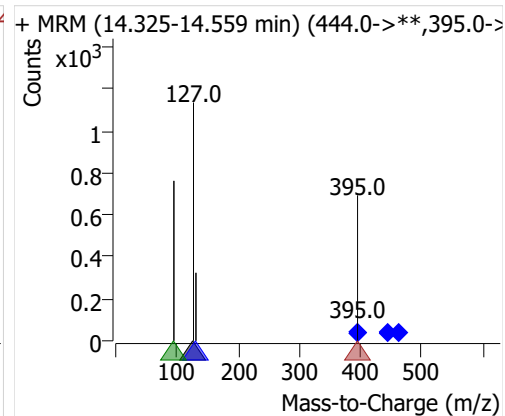
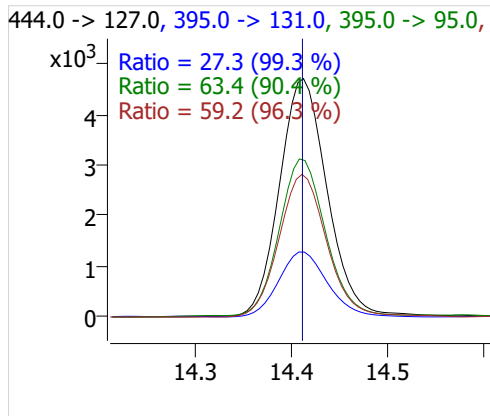
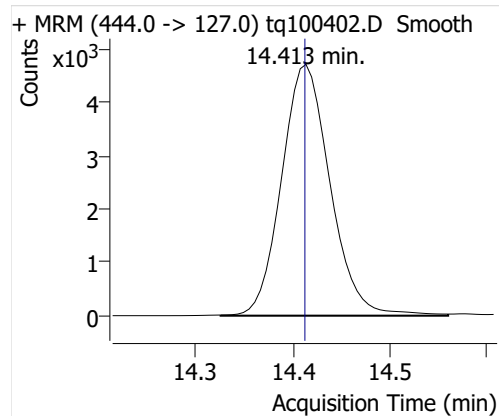
6:2 FTOH



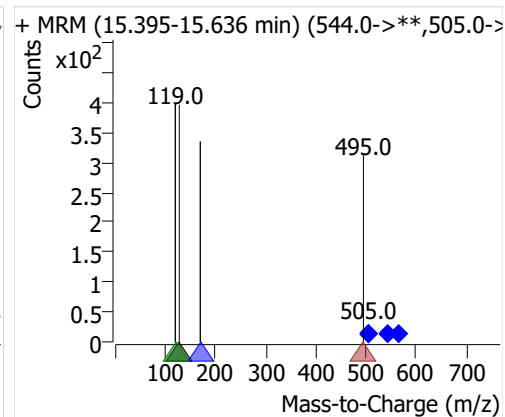
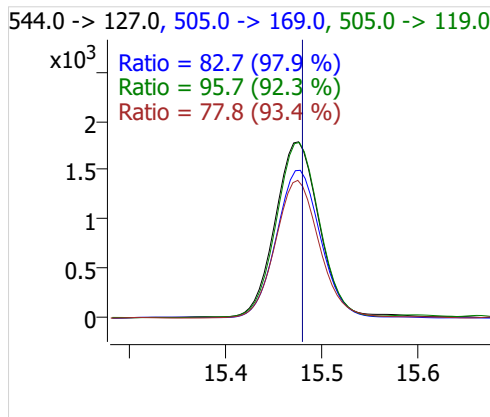
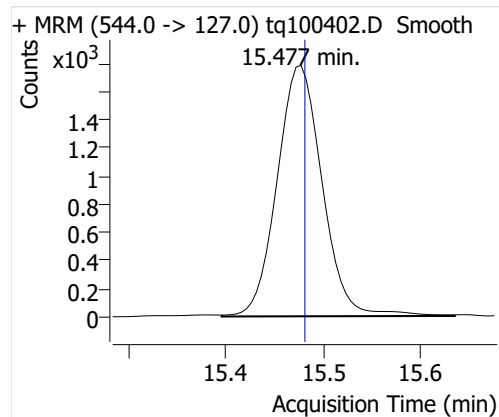
8:2 FTOH-C13



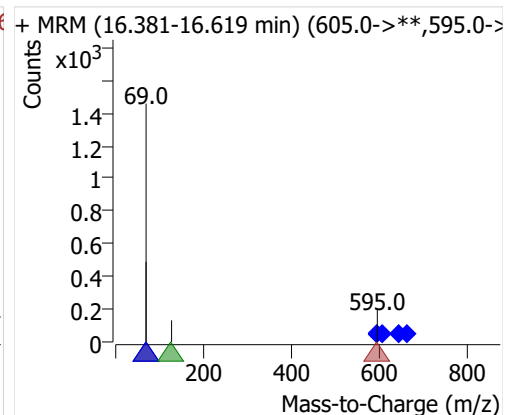
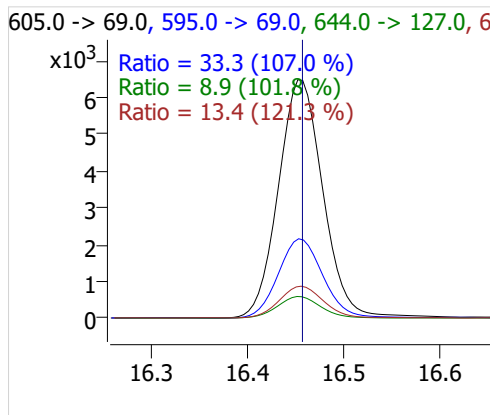
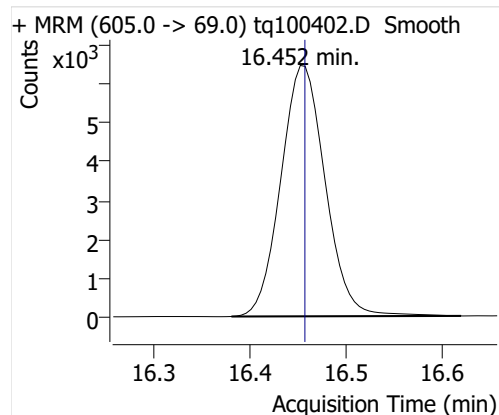
8:2 FTOH



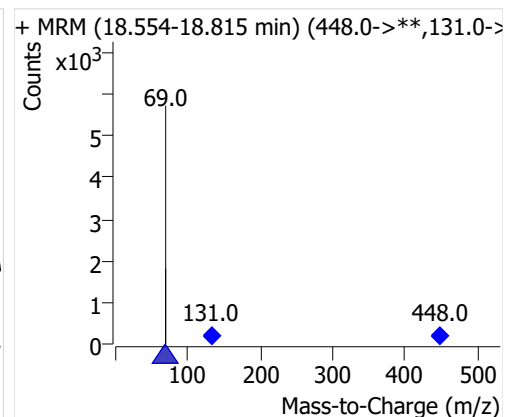
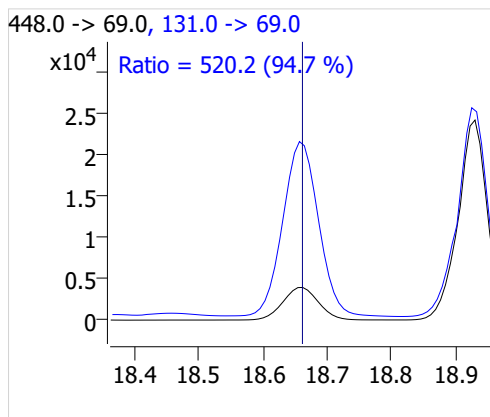
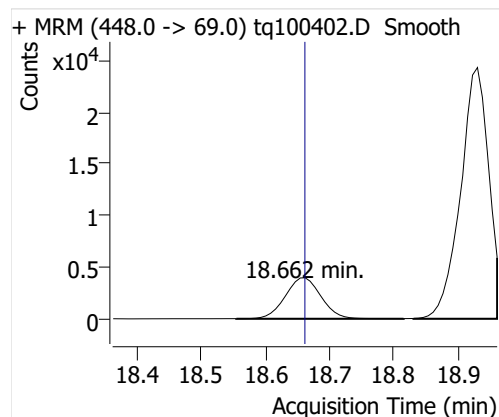
10:2 FTOH



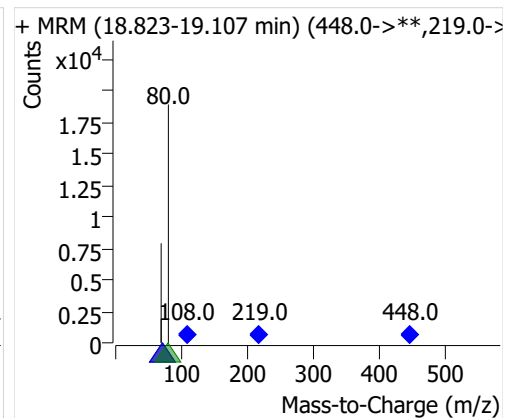
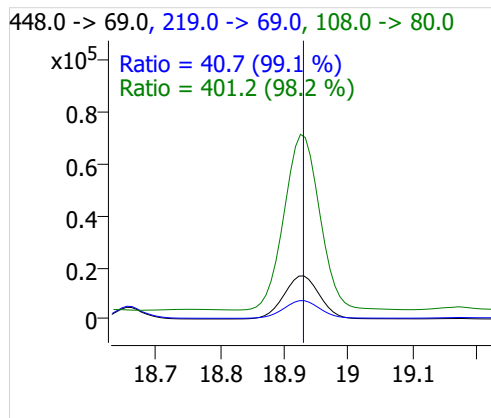
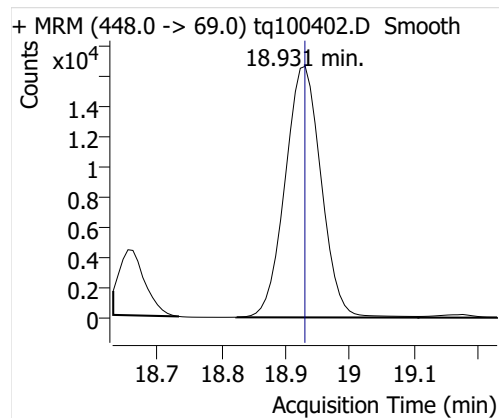
12:2 FTOH



NMeFOSA



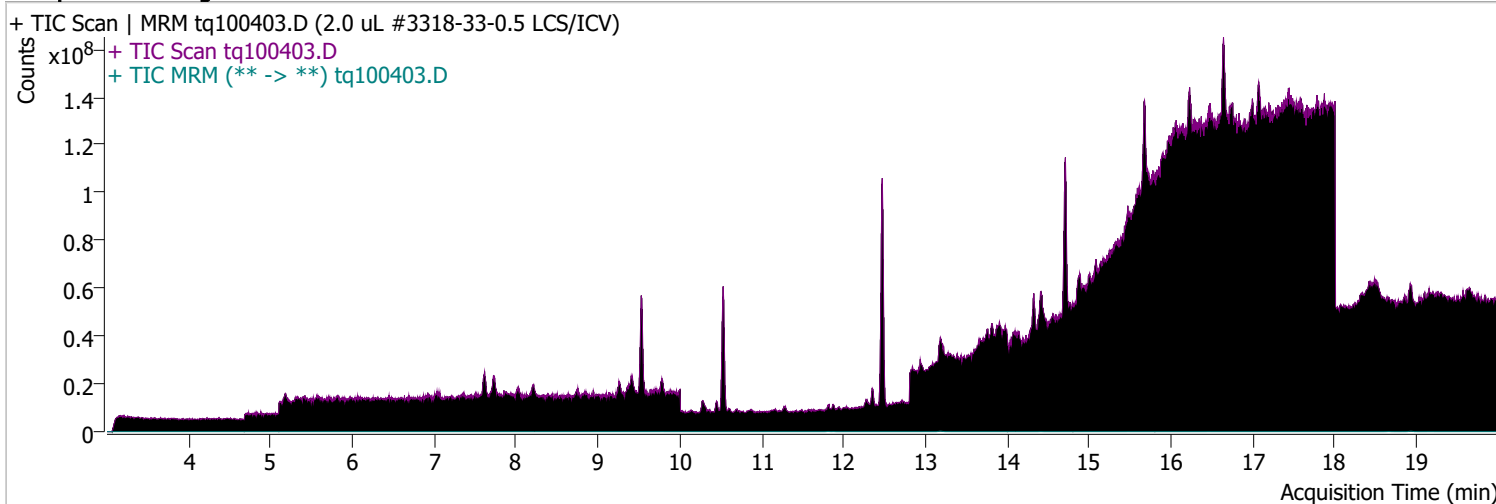
NETFOSA



Quantitative Analysis Sample Report

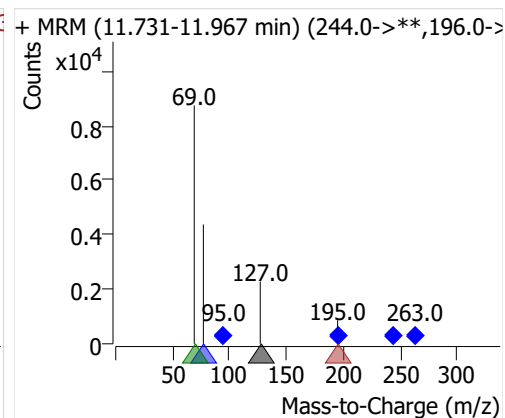
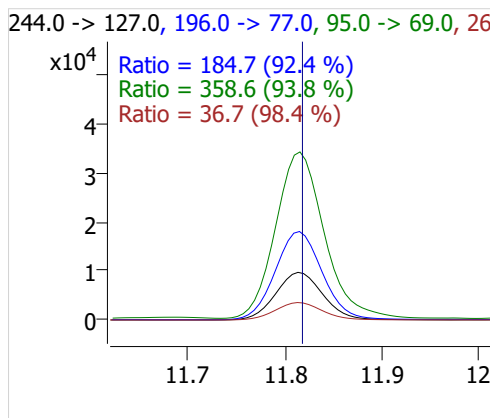
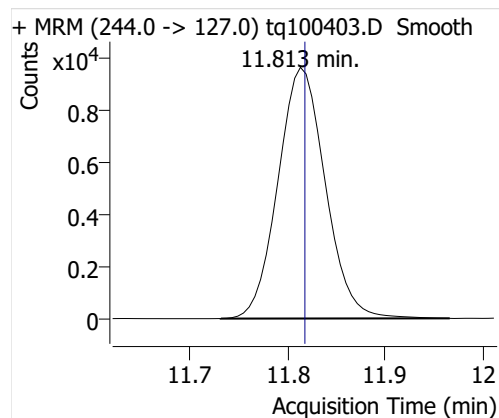
Batch Path D:\MassHunter\GCMS\1\data\04OCT22\QuantResults\04oct22.batch.bin
Analysis Time 10/4/2022 10:09 AM **Analyst Name** DESKTOP-R0LAL7E\analyst
Report Time 10/28/2022 2:18:10 PM **Reporter Name** ES-AREA1\US32_USR_INS22923
Last Calib Update 10/3/2022 8:55 AM **Batch State** Processed
Quant Batch Version 10.1 **Quant Report Version** 10.1
Acq. Time 10/4/2022 10:14 AM **Data File** tq100403.D
Sample Type QC **Sample Name** 2.0 uL #3318-33-0.5 LCS/ICV
Dilution 1 **Acq. Method** tq22m0930marks

Sample Chromatogram

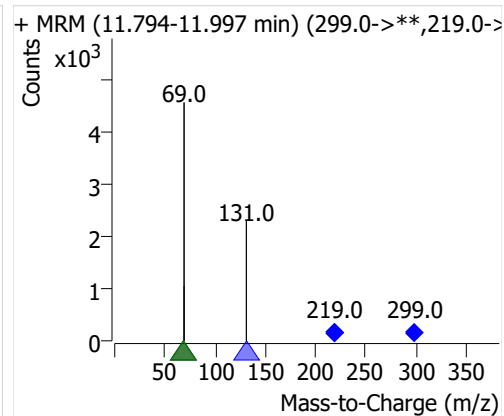
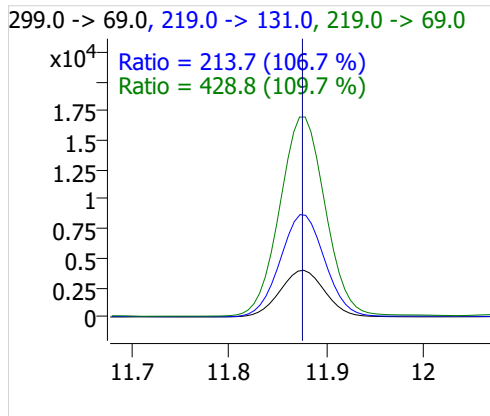
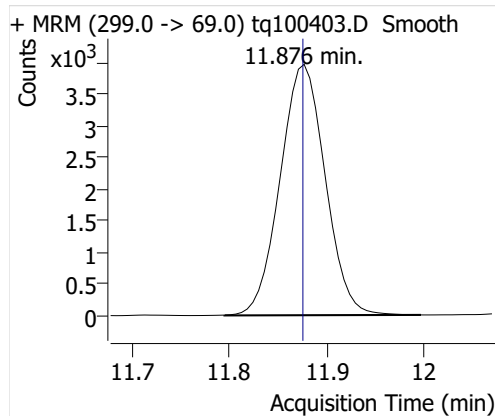


Compound	ISTD	RT	Resp.	ISTD Resp.	Resp. Ratio	Final Conc	Units
4:2 FTOH	6:2 FTOH-C13	11.813	32828	63297	0.5186	0.9435	ng
5:2sFTOH	6:2 FTOH-C13	11.876	12749	63297	0.2014	0.8511	ng
7:2sFTOH	6:2 FTOH-C13	13.175	27776	63297	0.4388	0.9221	ng
6:2 FTOH	6:2 FTOH-C13	13.209	54606	63297	0.8627	0.8544	ng
8:2 FTOH-C13	6:2 FTOH-C13	14.406	22684	63297	0.3584	1.0270	ng
8:2 FTOH	6:2 FTOH-C13	14.413	17464	63297	0.2759	0.9931	ng
10:2 FTOH	6:2 FTOH-C13	15.477	6226	63297	0.0984	0.9414	ng
12:2 FTOH	6:2 FTOH-C13	16.458	21404	63297	0.3381	0.8908	ng
NMeFOSA	6:2 FTOH-C13	18.662	17612	63297	0.2782	0.9920	ng
NEtFOSA	6:2 FTOH-C13	18.931	74024	63297	1.1695	0.9526	ng

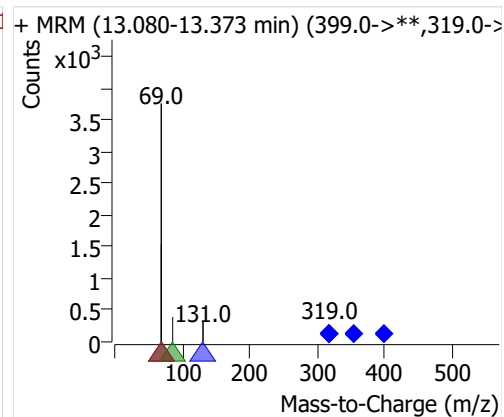
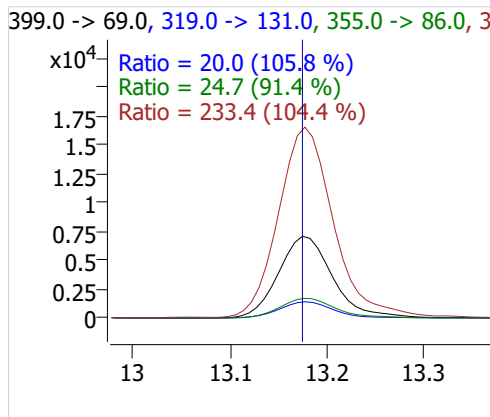
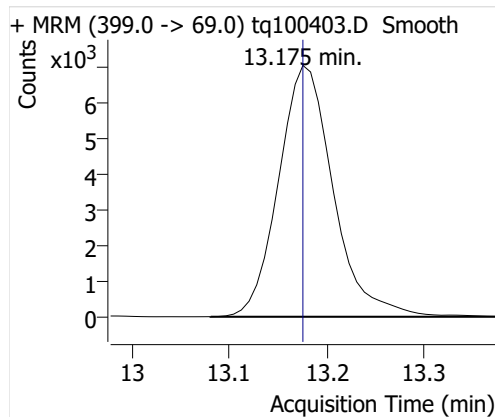
4:2 FTOH



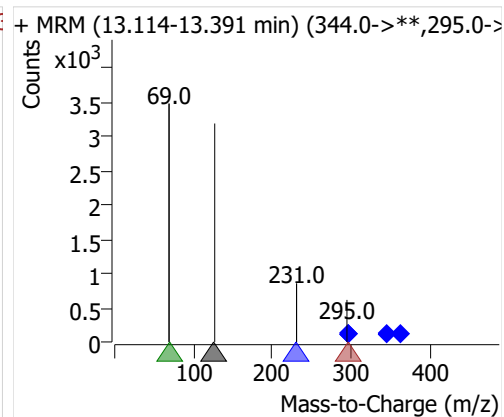
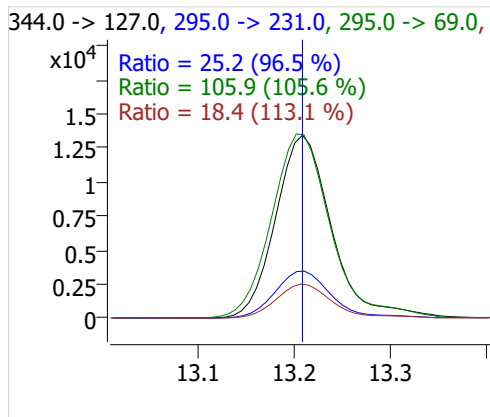
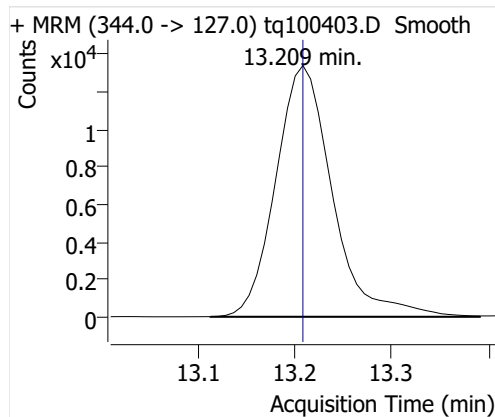
5:2sFTOH



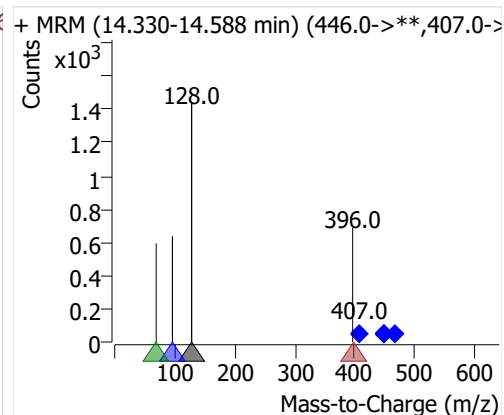
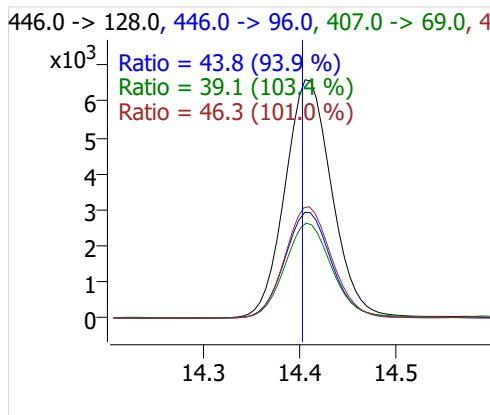
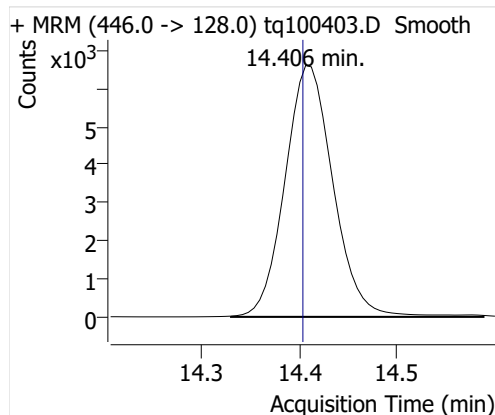
7:2sFTOH



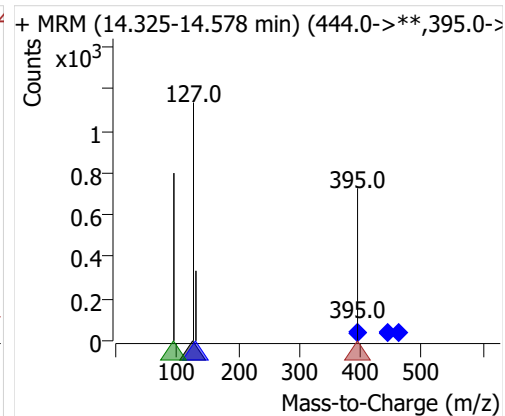
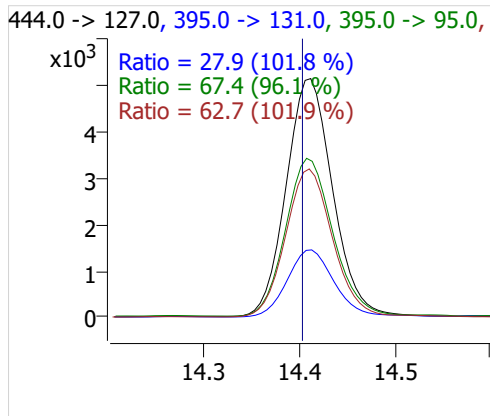
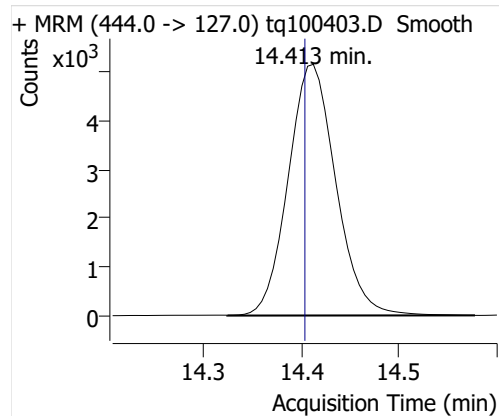
6:2 FTOH



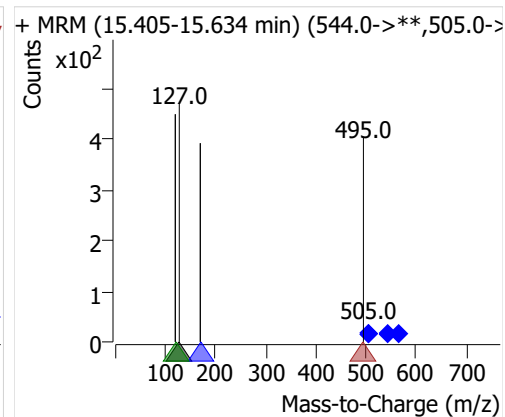
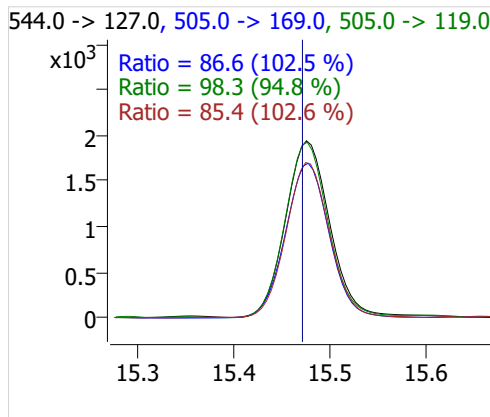
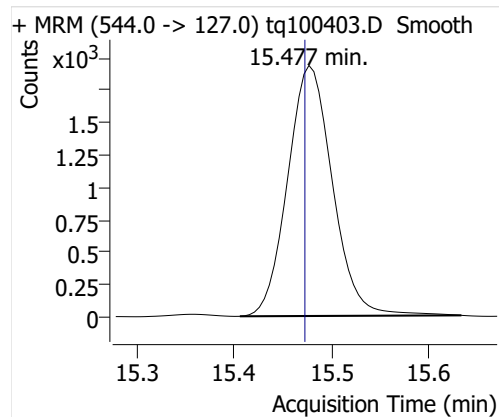
8:2 FTOH-C13



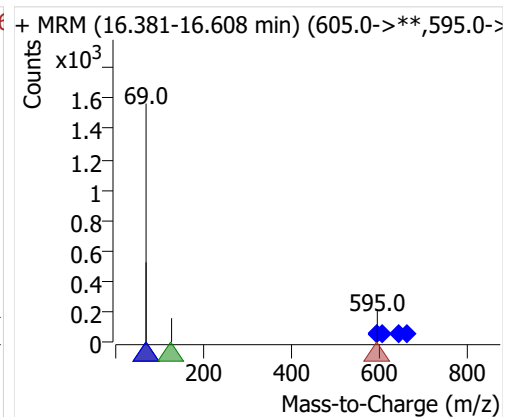
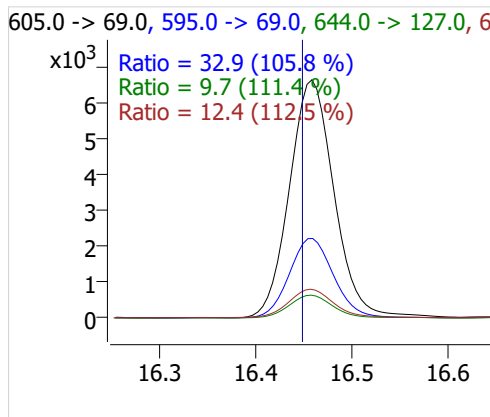
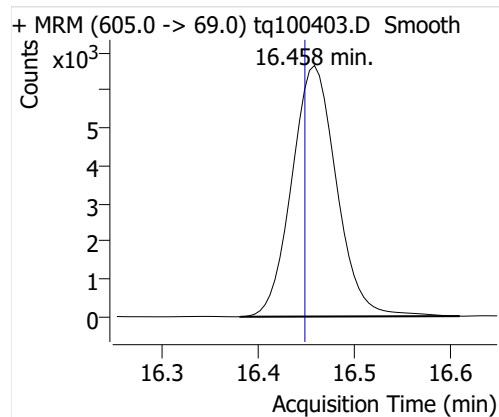
8:2 FTOH



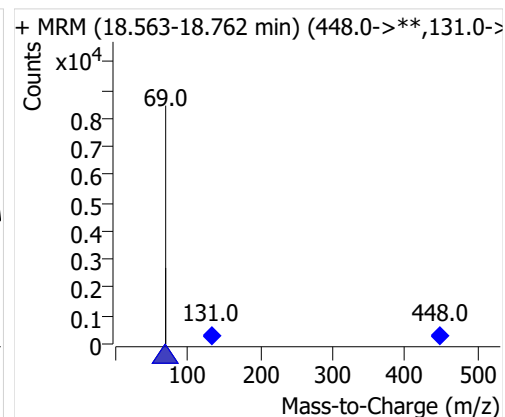
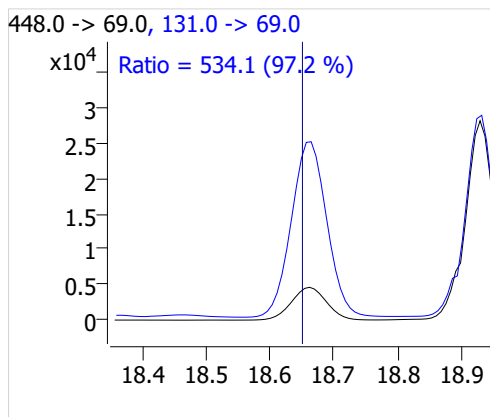
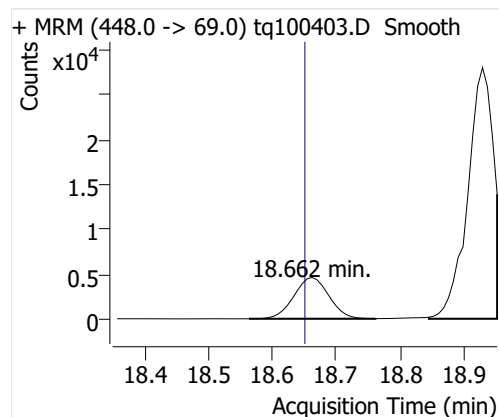
10:2 FTOH



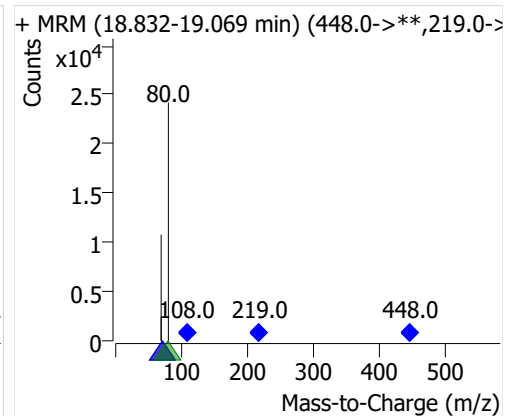
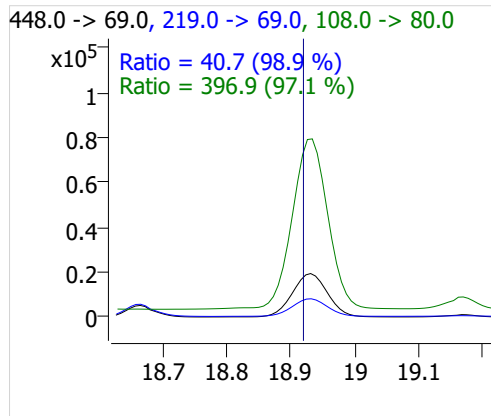
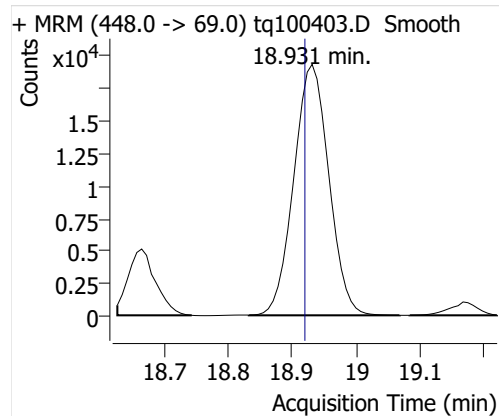
12:2 FTOH



NMeFOSA



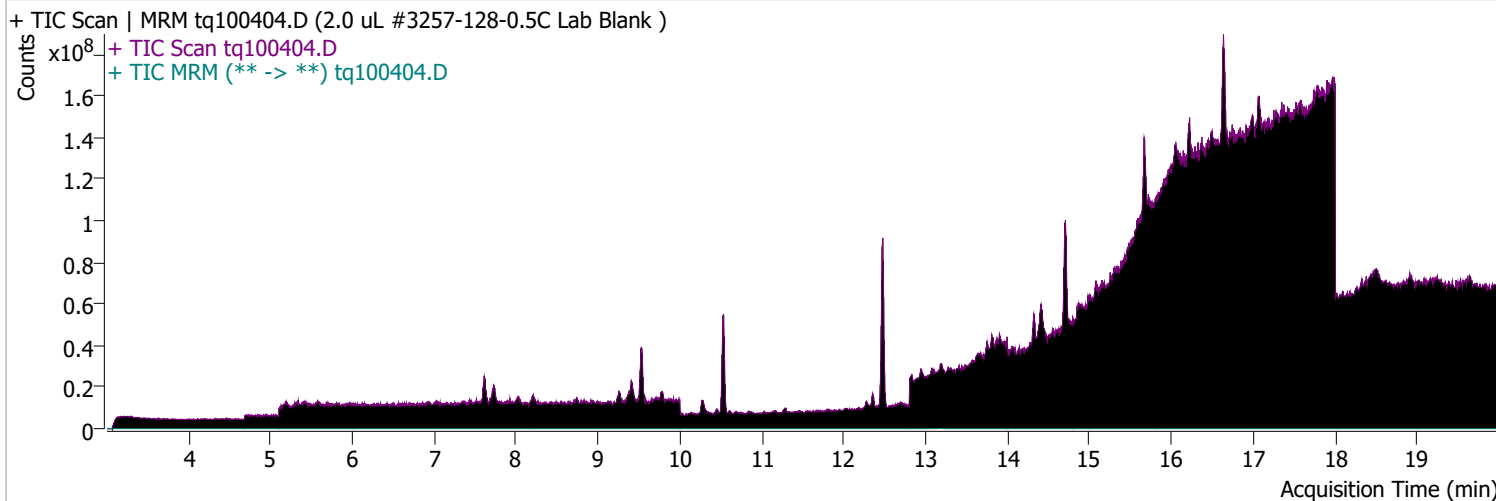
NETFOSA



Quantitative Analysis Sample Report

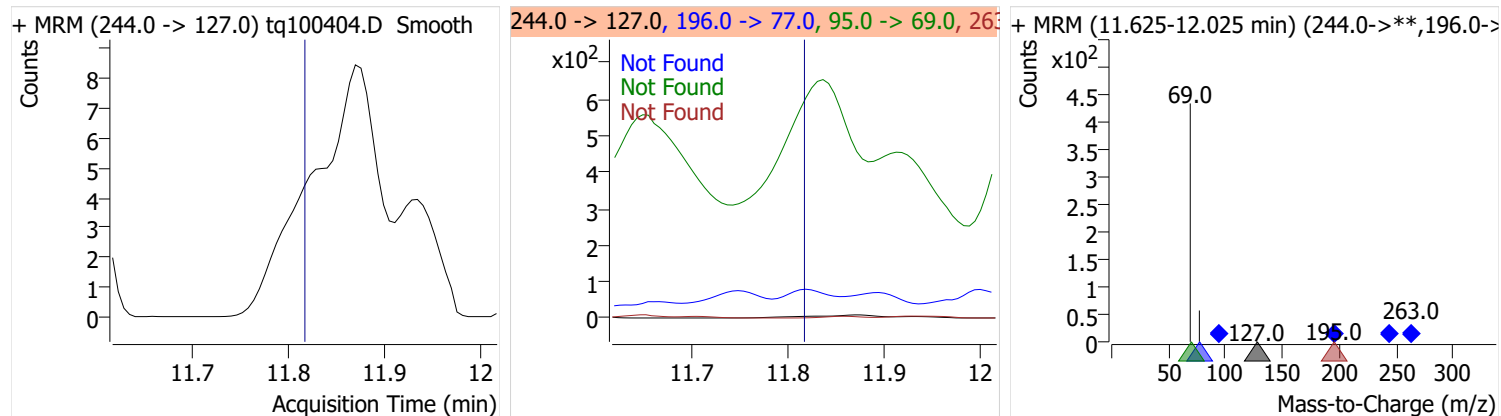
Batch Path	D:\MassHunter\GCMS\1\data\04OCT22\QuantResults\04oct22.batch.bin		
Analysis Time	10/4/2022 10:09 AM	Analyst Name	DESKTOP-R0LAL7E\analyst
Report Time	10/28/2022 2:18:11 PM	Reporter Name	ES-AREA1\US32_USR_INS22923
Last Calib Update	10/3/2022 8:55 AM	Batch State	Processed
Quant Batch Version	10.1	Quant Report Version	10.1
Acq. Time	10/4/2022 11:09 AM	Data File	tq100404.D
Sample Type	Sample	Sample Name	2.0 uL #3257-128-0.5C Lab Blank
Dilution	1	Acq. Method	tq22m0930marks

Sample Chromatogram

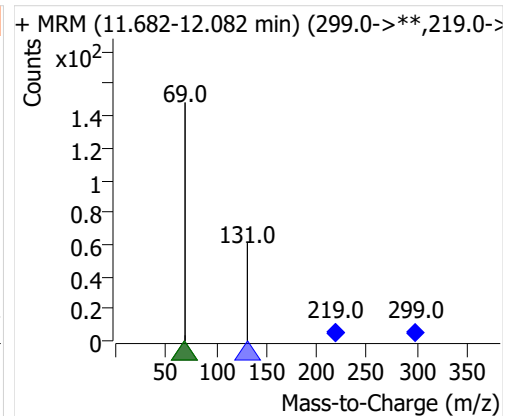
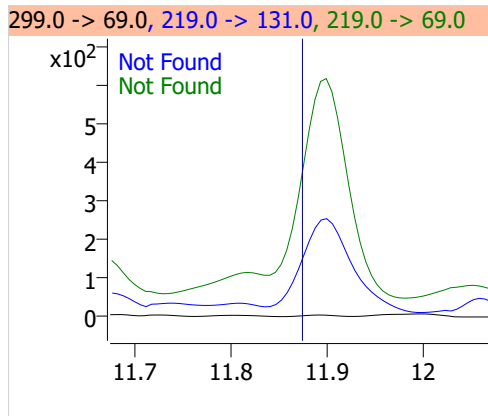
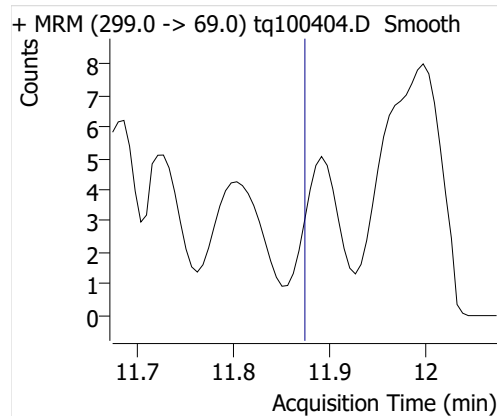


Compound	ISTD	RT	Resp.	ISTD Resp.	Resp. Ratio	Final Conc	Units
4:2 FTOH	6:2 FTOH-C13			60431		ND	ng
5:2sFTOH	6:2 FTOH-C13			60431		ND	ng
7:2sFTOH	6:2 FTOH-C13			60431		ND	ng
6:2 FTOH	6:2 FTOH-C13	13.209	1372	60431	0.0227	0.0225	ng
8:2 FTOH-C13	6:2 FTOH-C13	14.412	20800	60431	0.3442	0.9864	ng
8:2 FTOH	6:2 FTOH-C13	14.413	250	60431	0.0041	0.0149	ng
10:2 FTOH	6:2 FTOH-C13	15.472	171	60431	0.0028	0.0270	ng
12:2 FTOH	6:2 FTOH-C13	16.457	235	60431	0.0039	0.0102	ng
NMeFOSA	6:2 FTOH-C13	18.930	305	60431	0.0051	0.0180	ng
NetFOSA	6:2 FTOH-C13	18.931	273	60431	0.0045	0.0037	ng

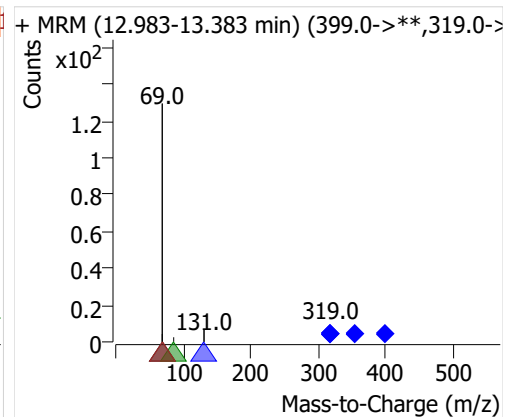
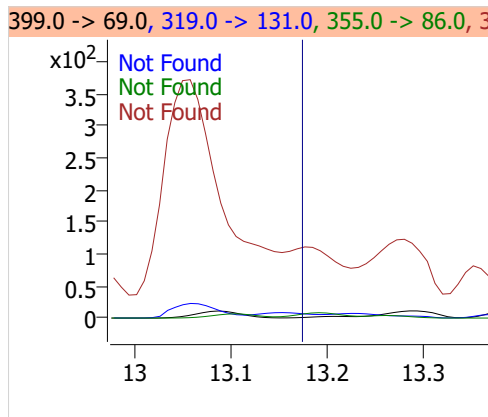
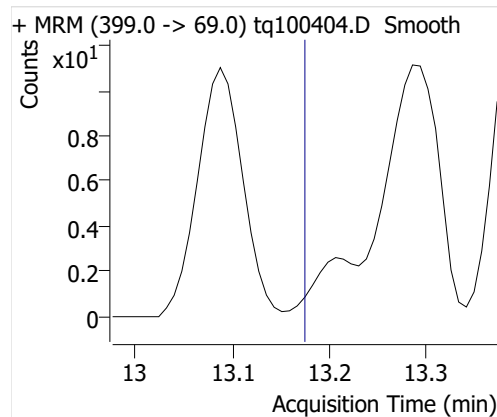
4:2 FTOH



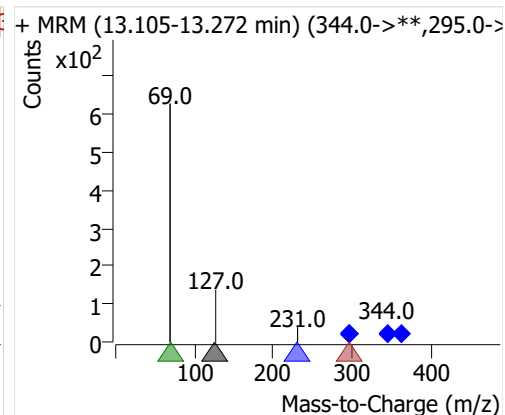
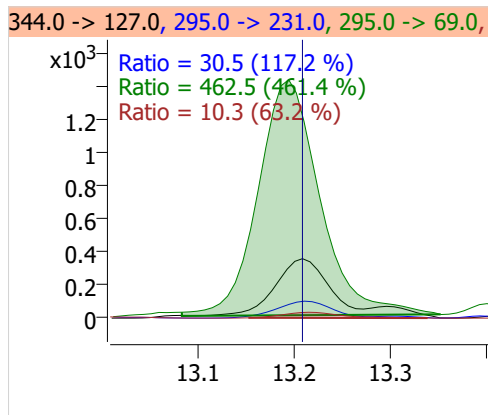
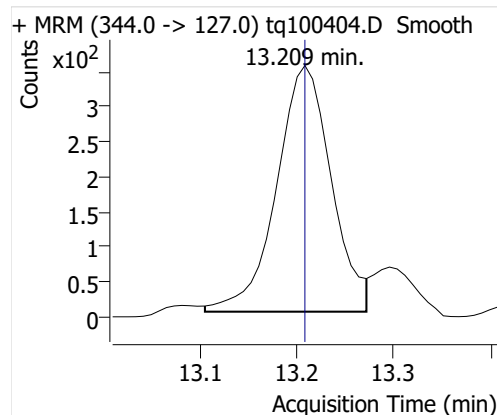
5:2sFTOH



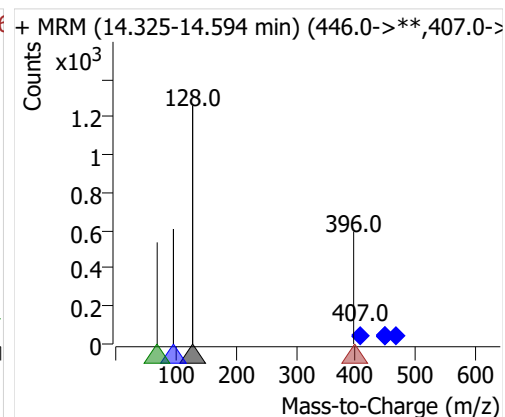
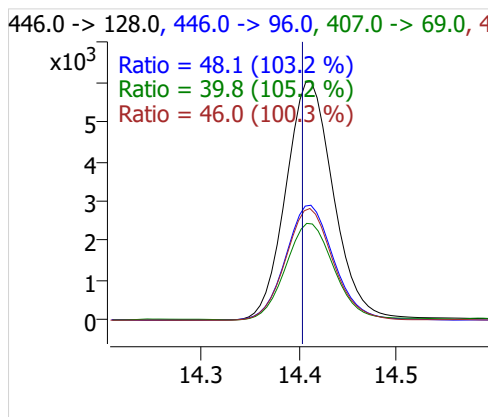
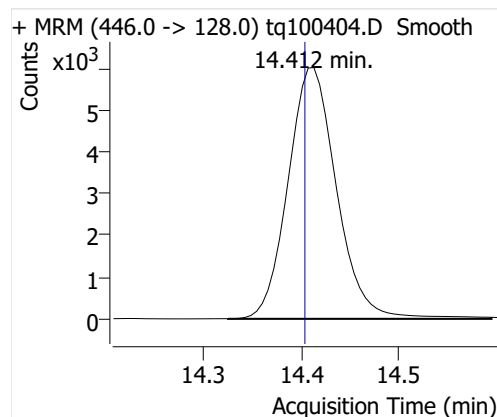
7:2sFTOH



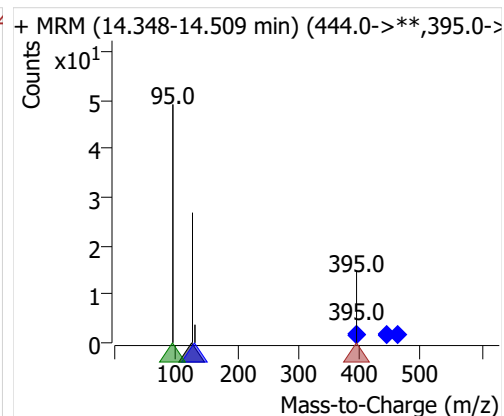
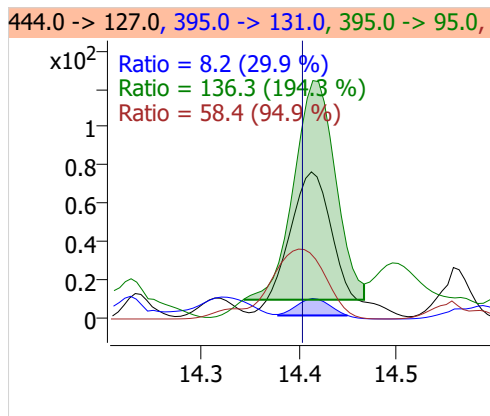
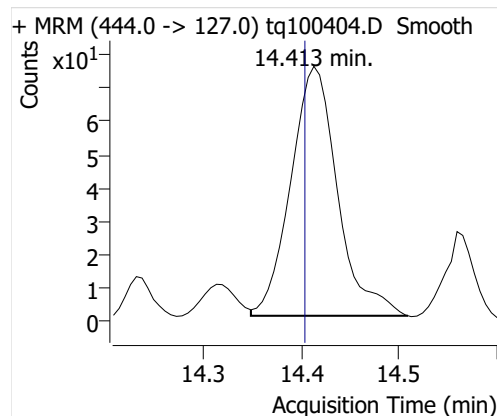
6:2 FTOH



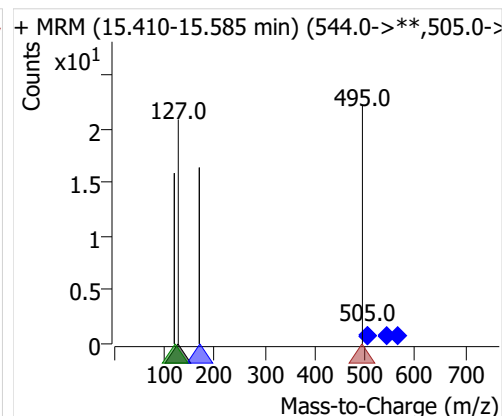
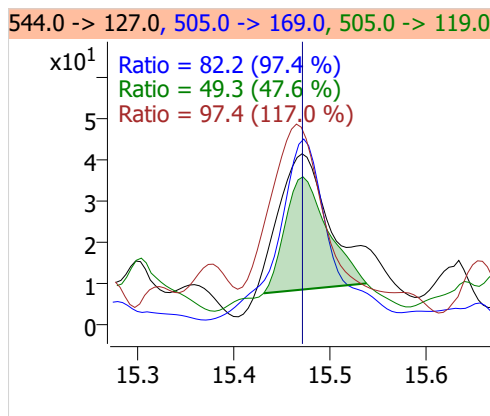
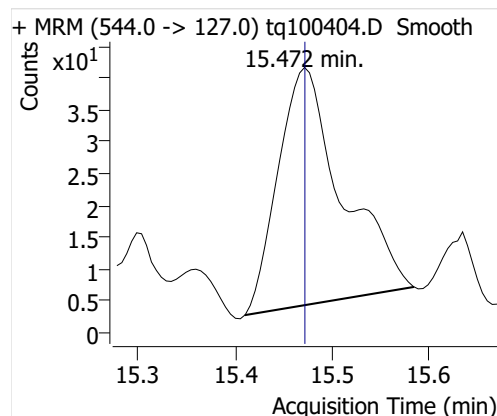
8:2 FTOH-C13



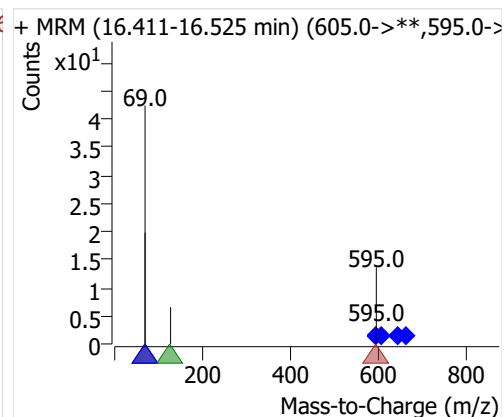
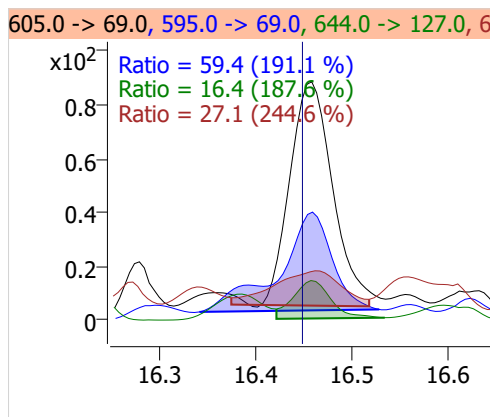
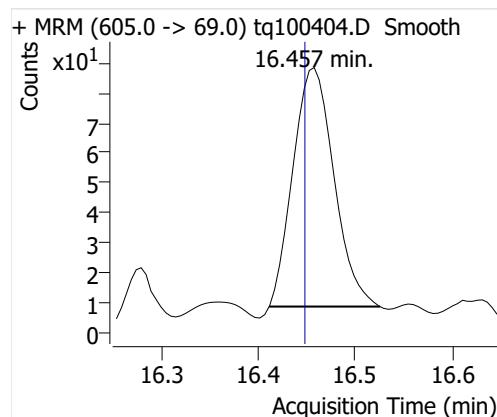
8:2 FTOH



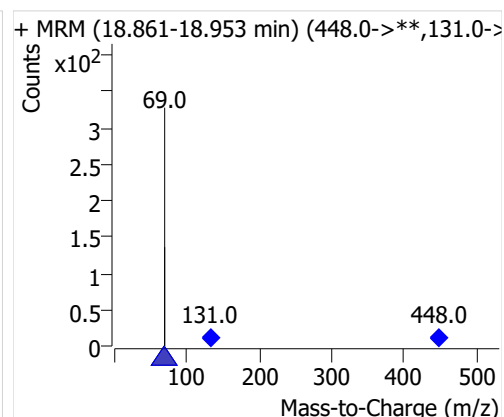
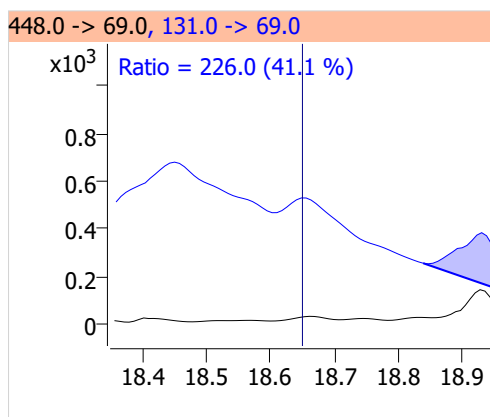
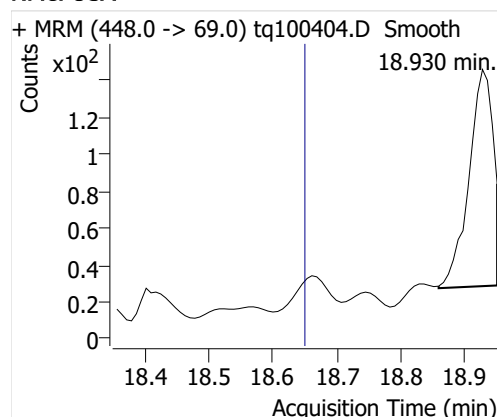
10:2 FTOH



12:2 FTOH



NMeFOSA



NETFOSA

